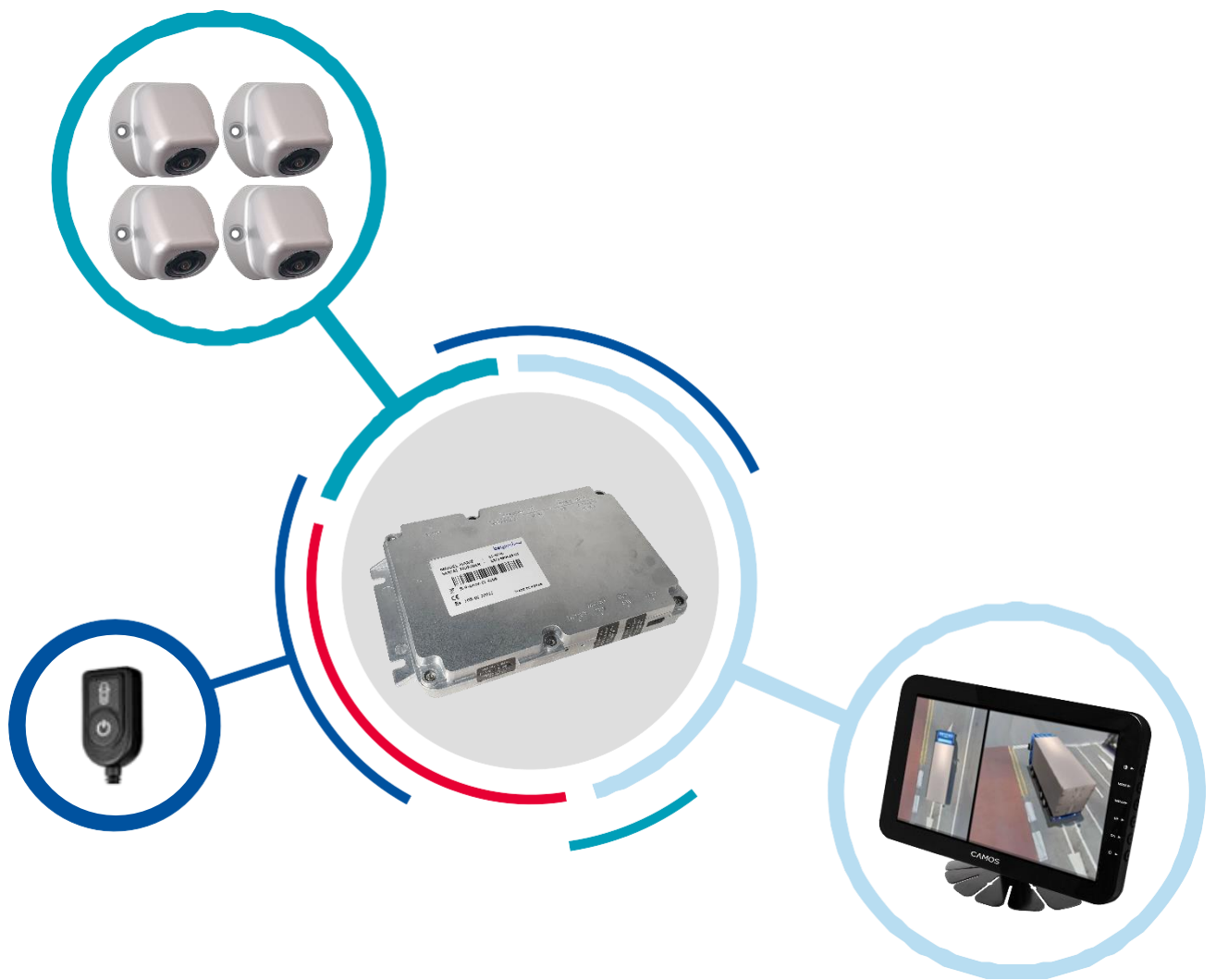
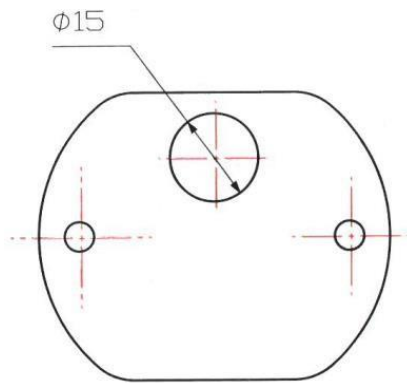


360° CAMOS 3D INSTALLATION MANUAL

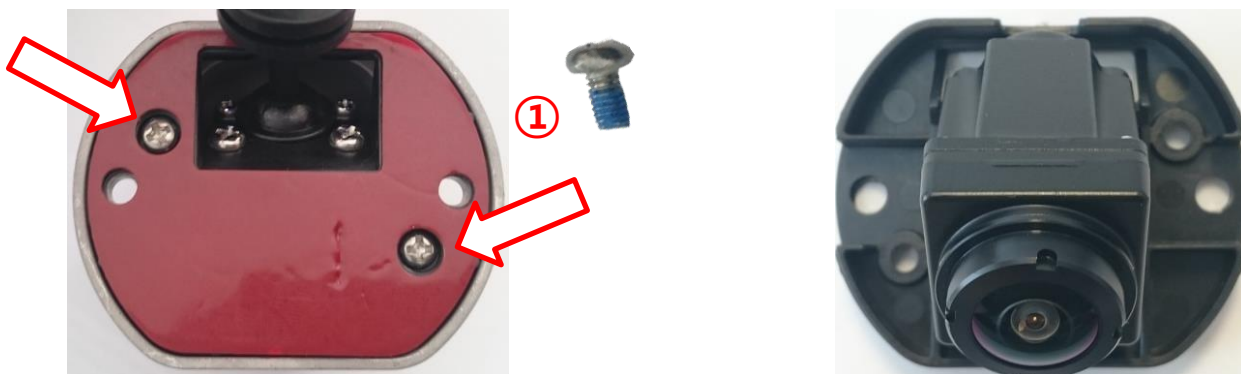


Select a mounting position of the four cameras.
On each side, camera should be installed as high as possible and centered.
Here is an example (Red dots show optimal mounting position)





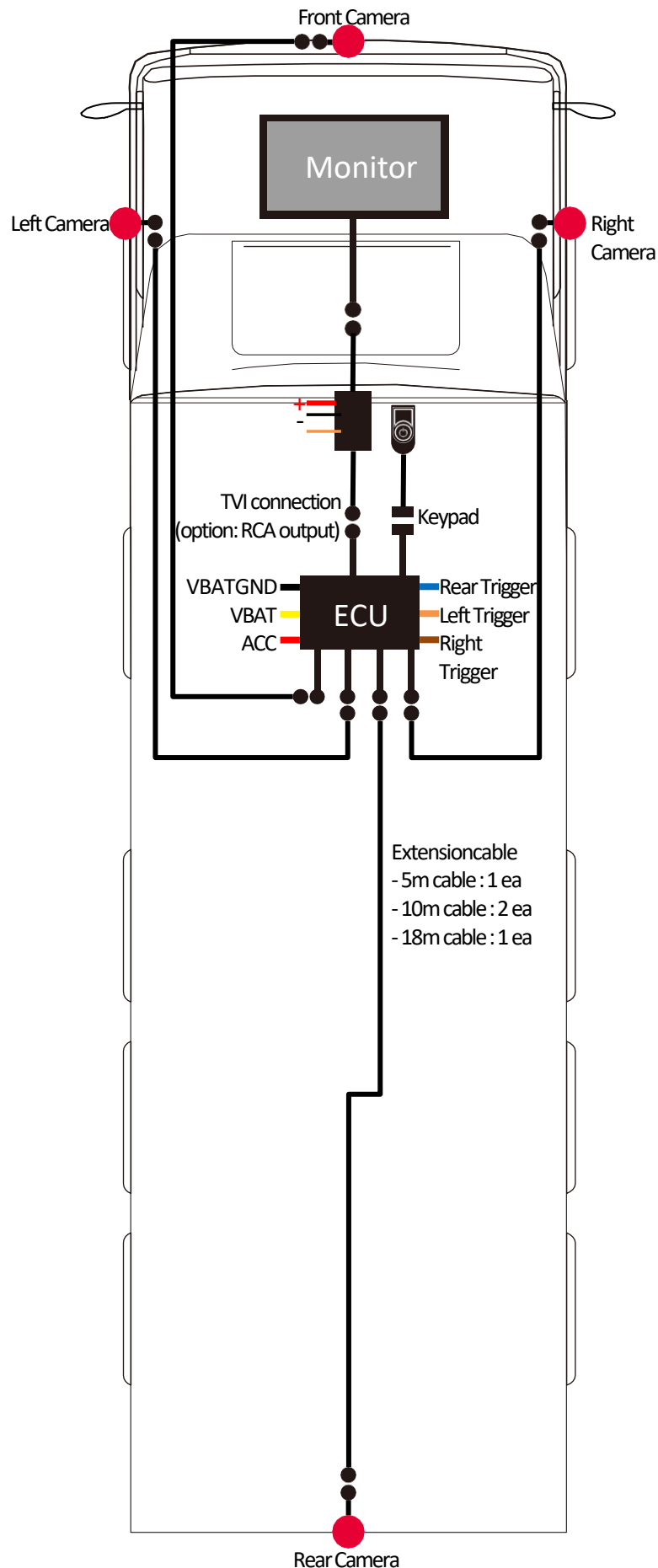
- Drill a hole of 15mm in diameter where a center of the camera holder will be mounted.
- If necessary, protect the bore from rust.



- Cover front housing on camera and tighten up the screws (①).
- Put cable into hole and place the rubber.
- Remove adhesive tape and fix the camera horizontally as possible.



- Fix housing with two screws (②). (Depending on a surface material, you may have to drill through, or pre-drill and a screw of appropriate material must be selected as well)
- Cover the screw with sticker (③).
- Fill up the hole at behind with a sealant to prevent from water.



•✂ Other main cables are not supported or only for developer