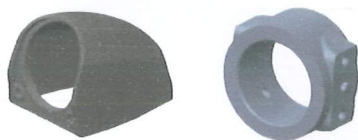


◆ **BRMXN12-01**

- Side view mount bracket for MXN12 camera series
- Suitable for various applications
- Easy Installation
- Aerodynamic and fashionable design
- Robust housing
- Adjustable viewing direction
- Stainless steel "bottom bracket" & "screw kits"

◆ **Contents**

Cover (1)

Camera Holder (1)



Bottom Bracket (1)



Gasket (1)



Screw cap (2)



Screw kit (1)



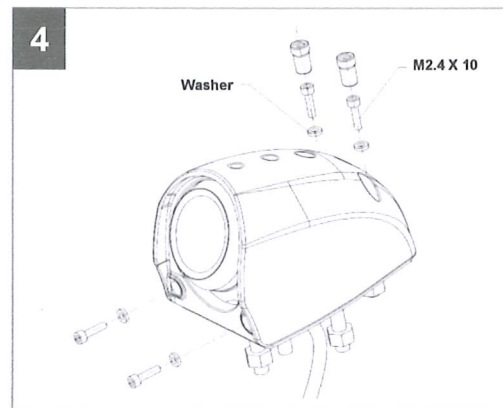
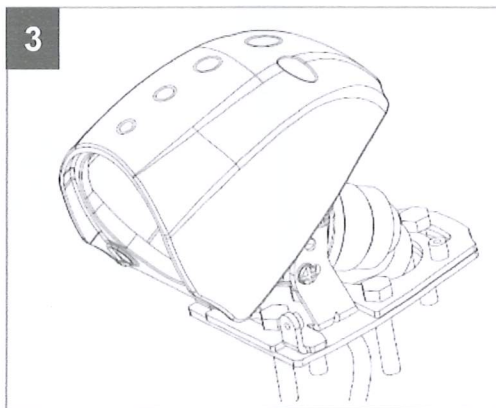
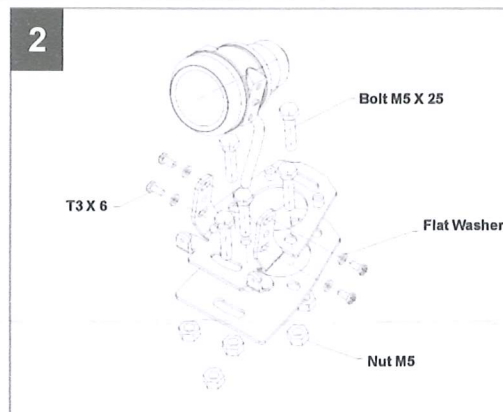
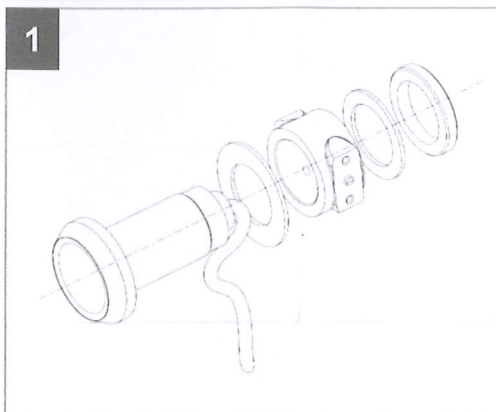
Manual (1)

◆ **Camera Installation**▪ **Screw kit**

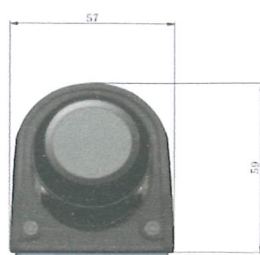
- Screw T3 x 6 (4)
- Flat Washer (for T3 x 6) (4)
- Bolt M5 x 25 (5)
- Nut M5 (5)
- Screw P/H #8 x 16 (5)
- Screw M2.5 x 10 (4)
- Washer (for M2.5 x 10) (4)

▪ **Compatible MXN12 cameras (optional):**

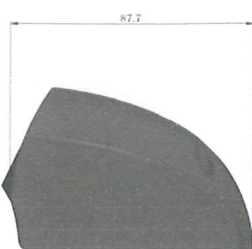
- MXN12C - 130 degree lens angle
- MXN12CW - 160 degree lens angle



- Make sure in advance that there is enough free space available at the inside of the vehicle's roof before you drill any holes from the outside.
- Install the camera into camera holder.
- Install the bracket's bottom plate at a suitable position on the vehicle's body.
- Before fixing the fixation holder, adjust the camera's viewing direction into the required camera picture at the monitor.
- Then run the camera cable through the rubber grommet (in organic lines) and close the bracket's top housing part carefully.

◆ **Dimensions**

(mm)



< Camer angle adjustment >

