

16699



CAM-SPRINT NTG7



Overview

CAM-SPRINT NTG7 will allow you to install rear camera & front/side camera onto the factory 10" OEM touch screen fitted in the Mercedes Sprinter 2024 onward with NTG7 & 2024 VITO. This interface features active moving guidelines and front/side cameras selectable using either OEM button or preset

Kit Contents



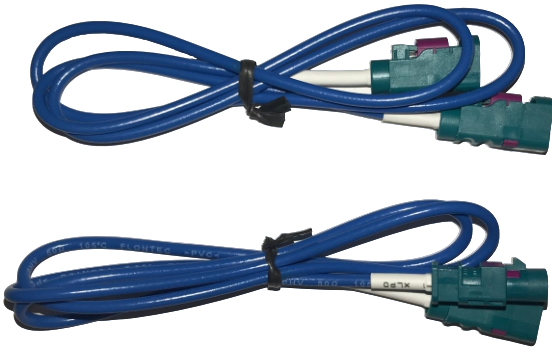
Interface



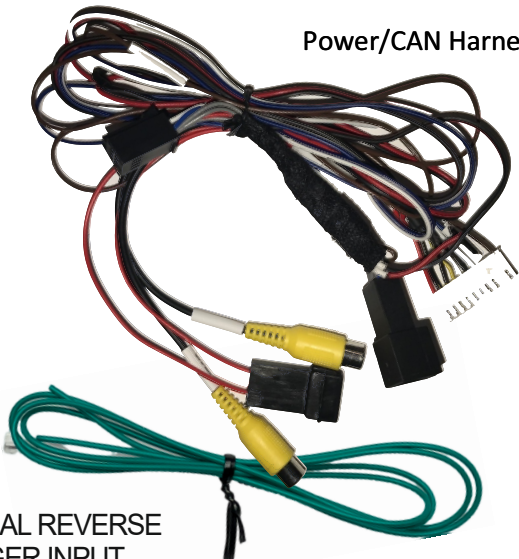
iR Remote



iR Remote sensor



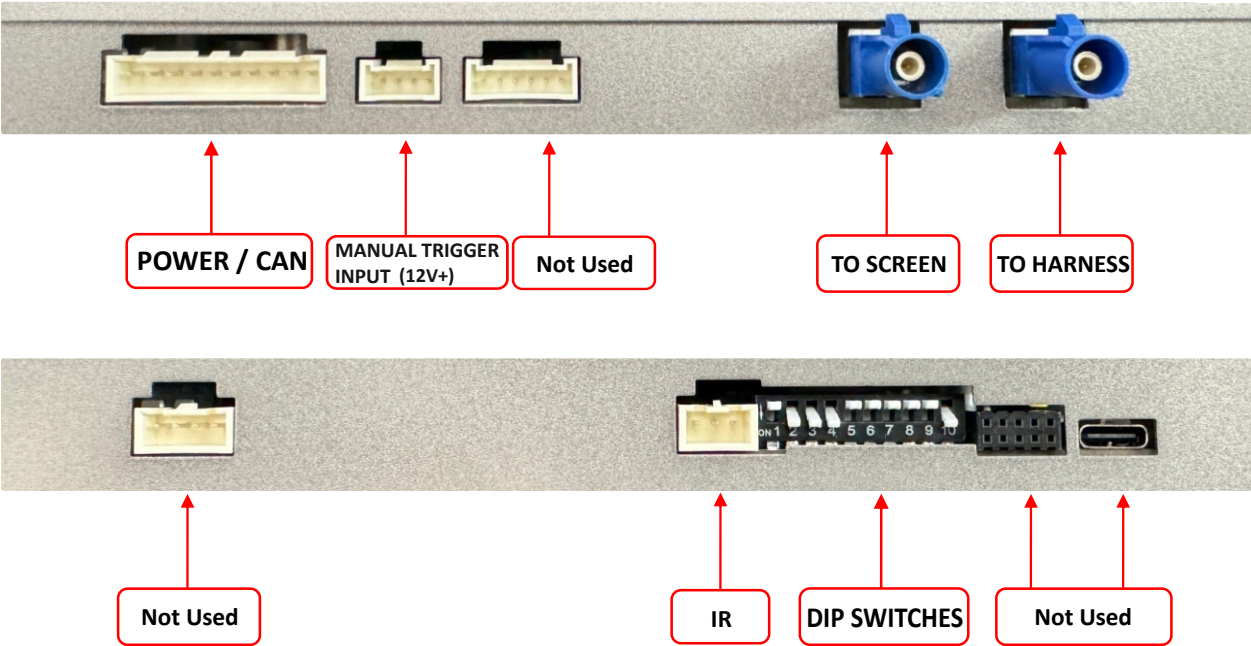
LVDS
Video
Cables



Power/CAN Harnesses

MANUAL REVERSE
TRIGGER INPUT

Interface



Dip Switch Settings

| Dip SW: | 1 | 2 | 3 | 4 | 5 | 6 | 7 | 8 | 9 | 10 |
|---------|---------|--------|-----------|-----------------|--------------|--------------|--------------|---|---|-----------|
| UP | KEEP UP | AV OFF | | OEM CAM | VEH SETTINGS | VEH SETTINGS | VEH SETTINGS | | | |
| DOWN | | AV ON | KEEP DOWN | AFTERMARKET CAM | VEH SETTINGS | VEH SETTINGS | VEH SETTINGS | | | KEEP DOWN |

Diagram showing the dip switch settings for front/side camera. The switches are numbered 1 to 10. Switch 2 is in the DOWN position. Switch 1 is in the UP position. Switches 3, 4, 5, 6, 7, 8, 9, and 10 are in the OFF position.

**FOR FRONT / SIDE CAMERA
ENSURE "DIP SWITCH 2" IS IN
THE DOWN POSITION**

| CAMERA TYPE | Dip SW 8 | Dip SW 9 | SEC CAMERA SKU: |
|------------------|----------|----------|-----------------------|
| CVBS (NTSC only) | OFF | OFF | |
| AHD 720P30 * | OFF | ON | 10215, 10220 |
| AHD 1080P25 * | ON | OFF | |
| AHD 1080P30 * | ON | ON | 11054, 16065, 16058HD |

** AHD settings are generic, and will need coding for specific cameras and as STD, image may appear slightly off*

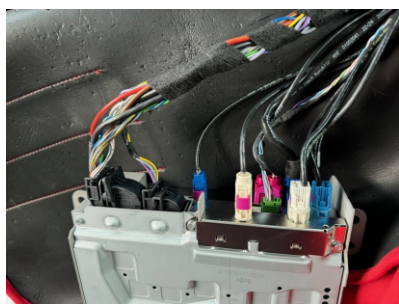
***Note: Remove power to the unit prior to making adjustments to the dip switches.**

Installation

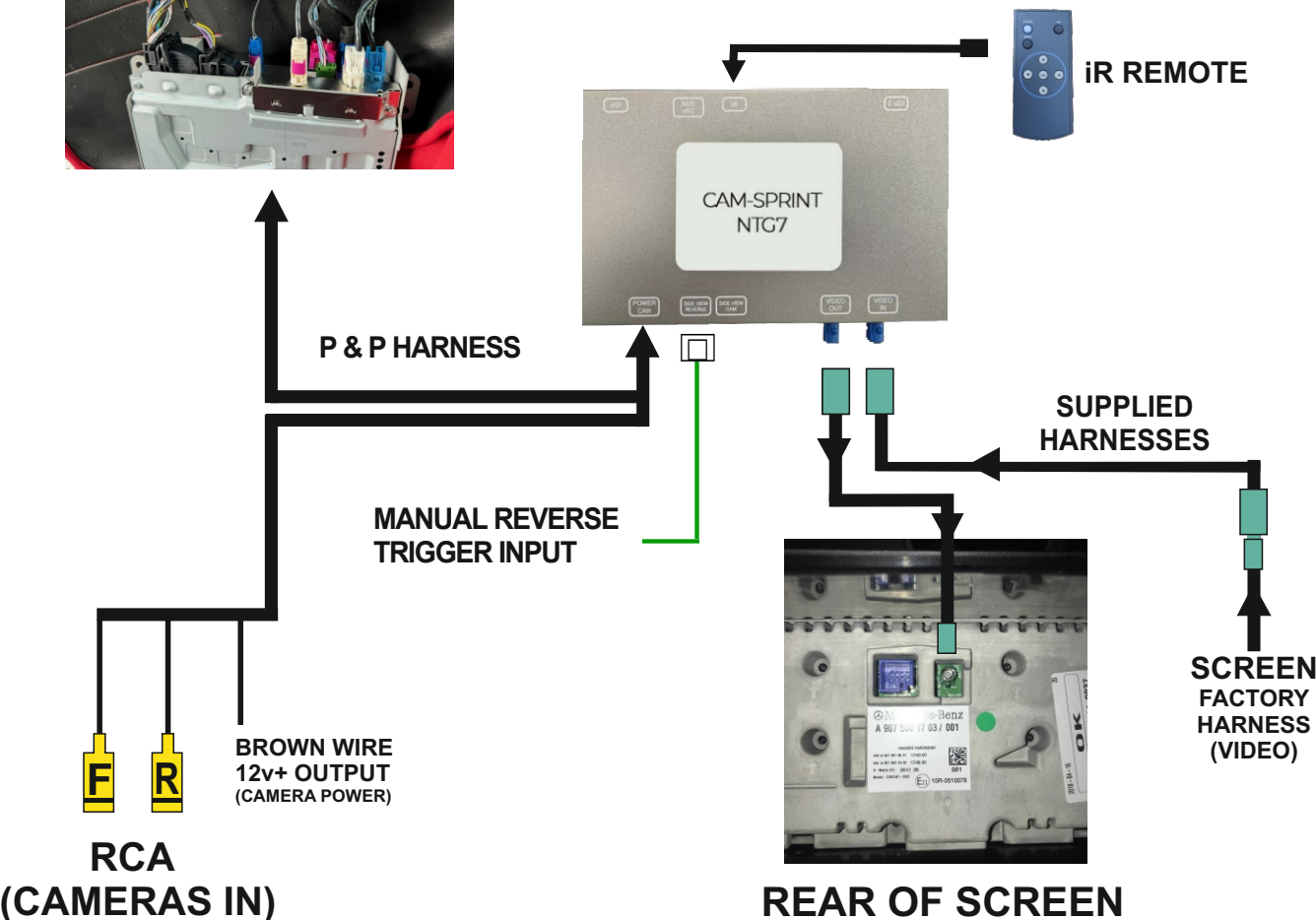
The installation takes place at the rear of the factory **SCREEN** and **RADIO**. Certain trims and fixings will have to be removed in order to gain access to the Screen and Radio.

Installation Diagram

HARNESS AT THE REAR OF MEDIA UNIT



| CAN CONNECTIONS | |
|-----------------|-------------------------|
| Interface wires | Connect to vehicle |
| SPRINTER | |
| WHITE (CAN LOW) | GREEN (PIN 7) |
| BLUE (CAN HIGH) | BLUE / WHITE (PIN 20) |
| VITO | |
| WHITE (CAN LOW) | YELLOW (PIN 7) |
| BLUE (CAN HIGH) | YELLOW / WHITE (PIN 20) |



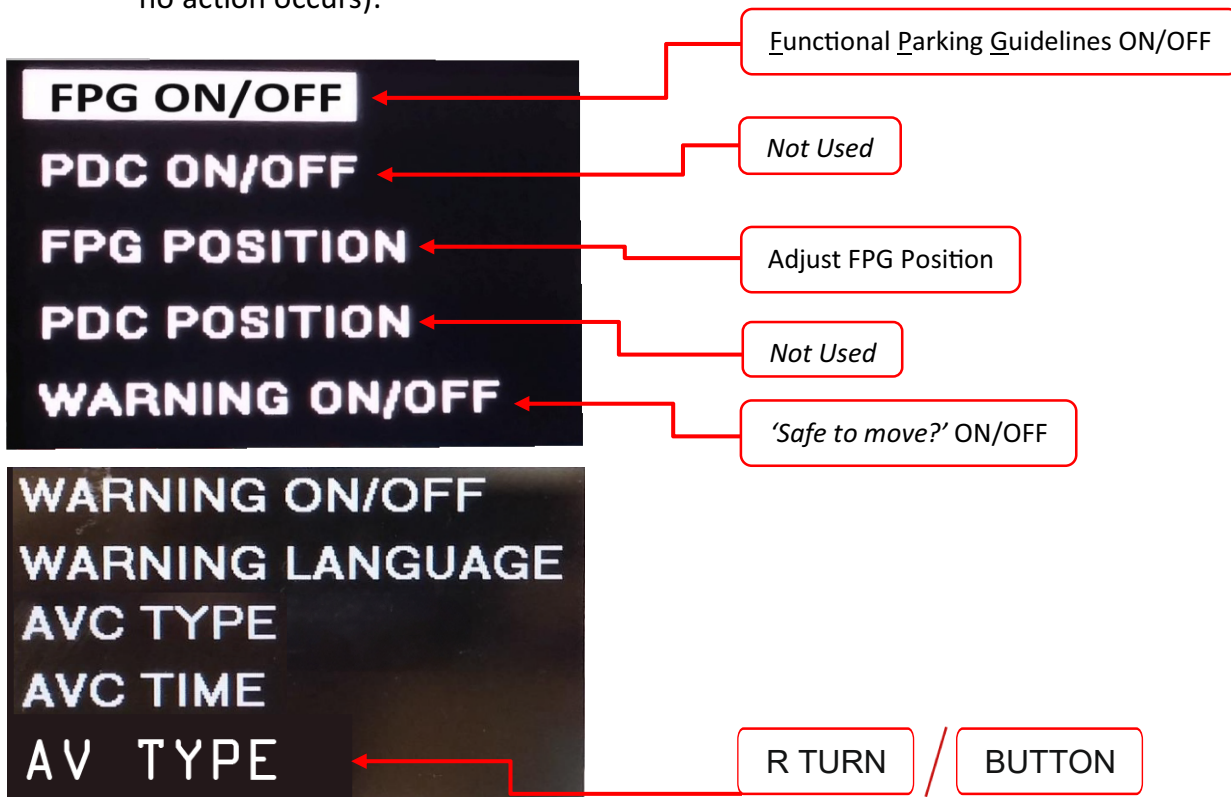
WIRE FUNCTIONS

| INTERFACE | FUNCTION |
|-----------|--|
| RED | - ACC 12v+ (INPUT) |
| BLACK | - GND (INPUT) |
| BROWN | - 12v+ OUTPUT (CAMERA POWER) |
| GREEN | - 12v+ REVERSE WIRE (only if it will not switch via CAN) |
| WHITE | - CAN LOW |
| BLUE | - CAN HIGH |

Menu Adjustments

Before you start:

- The IR-Eye must be connected
- Make sure the car's ignition is on and radio is on
- You must be in **Reverse Camera** mode (place vehicle in reverse)
- Press the **OK BUTTON** 4 times (numbers will display per press), then press **POWER**.
- The **OSD Menu** will appear on screen (auto-time out in about 5 seconds if no action occurs).



To activate side camera function automatically by right-turn indicator, "AV TYPE" must be set to "R TURN". Do this using the arrow keys on the remote control. Press the "OK" button to select this setting.

To manually activate the side-camera function via a button on the steering wheel, "AV TYPE" must be set to "BUTTON". Do this using the arrow keys on the remote control. Press the "OK" button to select this setting.

NOTE: ENSURE "DIP SWITCH 2" IS IN THE DOWN POSITION

NOTE: Once you have finished adjusting your settings, you must press the "POWER" button to save your settings.

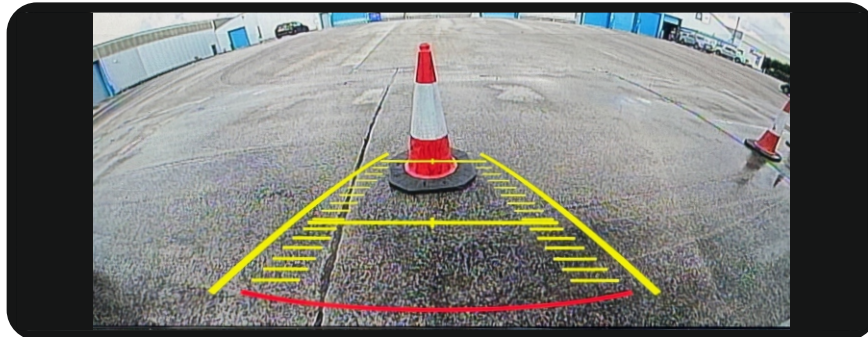
REAR CAMERA

THERE ARE 2 DISPLAY MODES (SEE BELOW)

PRESS AND HOLD THE
“**RETURN**” BUTTON ON THE
STEERING WHEEL FOR **3 SECS**
TO SWITCH THE SCREEN VIEW
WHEN IN REVERSE



MOVING GUIDELINES DISPLAYS ON 85% SCREEN (Default)



MOVING GUIDELINES DISPLAYS ON FULL SCREEN



Note: If display doesn't switch to reverse image when shifting into reverse or screen is distorted, check dip switch settings on page 2.

Note: If all dip switch settings have been tried, connect the provided 'Reverse Trigger Input' wire (green) and supply this wire with an OEM reverse 12v (+) signal.

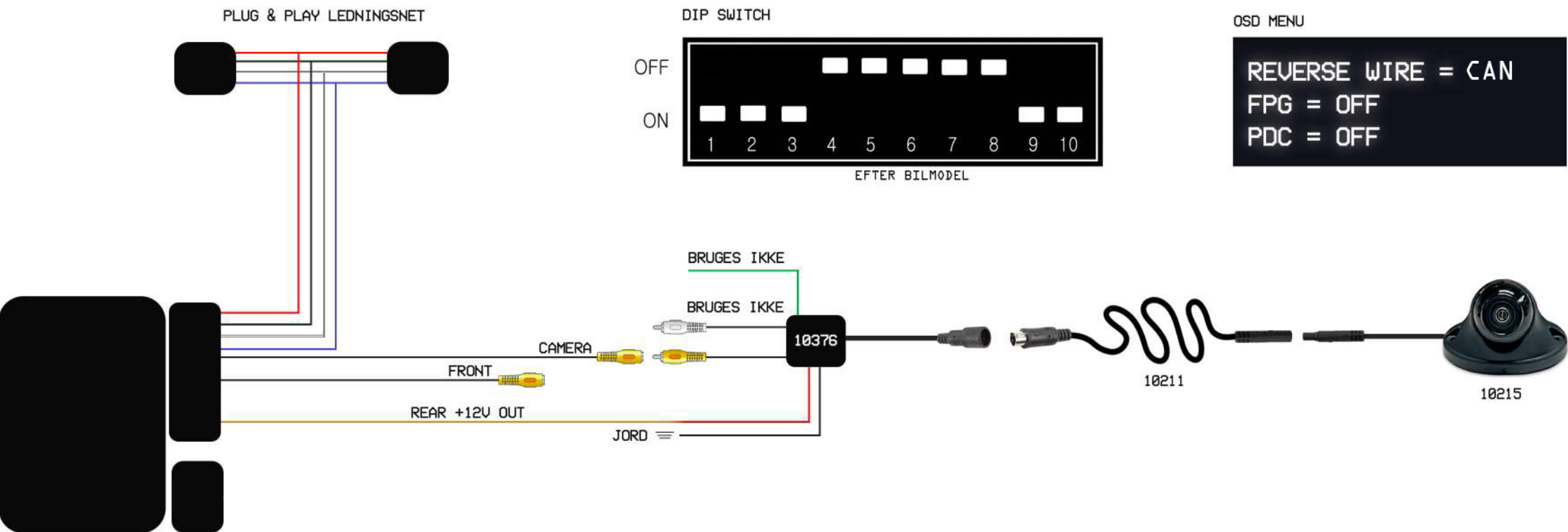
FRONT / SIDE CAMERA

NOTE: ENSURE “DIP SWITCH 2” IS IN THE DOWN POSITION

To select Front / Side camera, press and hold the return button (on the steering wheel) for 2 secs. To cancel the camera either press and hold the return button for 2 sec or turn off IGN, and open the drivers door.



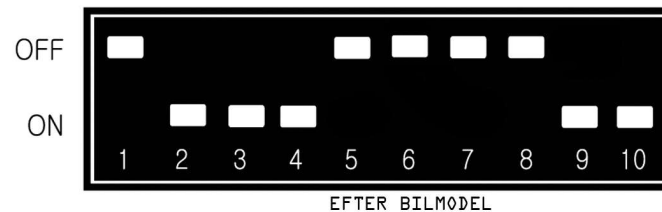
10215



PLUG & PLAY LEDNINGSNET

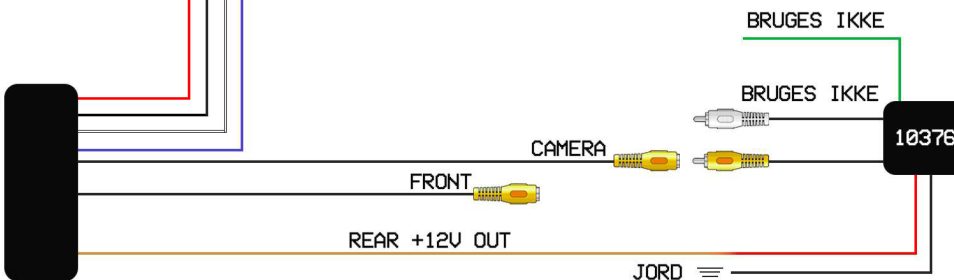
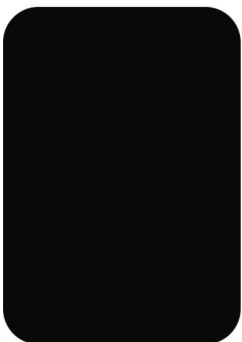


DIP SWITCH



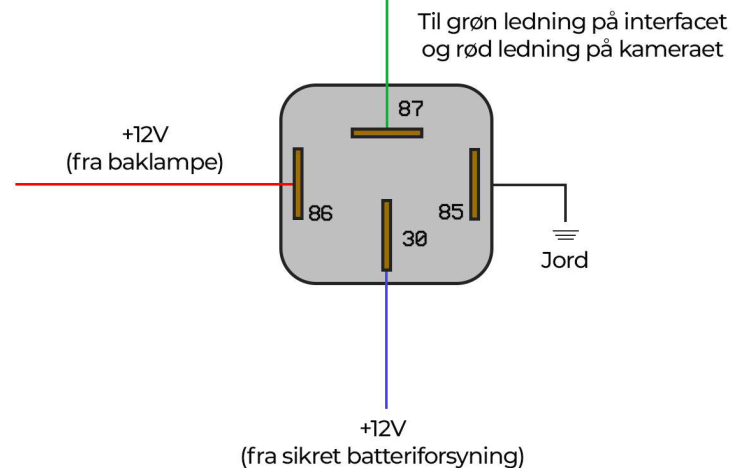
OSD MENU

REVERSE WIRE = CAN
FPG = ON
PDC = ON



Bemærk – Den grønne triggerledning bør **kun** bruges, hvis interfacet ikke automatisk skifter til bakkameraet via CANBUS-dekoding. Hvis der ikke sker noget, når bilen sættes i bakgear, kan denne grønne triggerledning bruges som manuel kontrol.

Det er vigtigt, at bak-signalet ikke er tilsluttet direkte – bak-signalet **skal** gå gennem et relæ som vist i diagrammet.

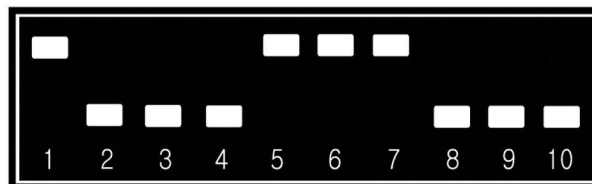


PLUG & PLAY LEDNINGSNET



DIP SWITCH

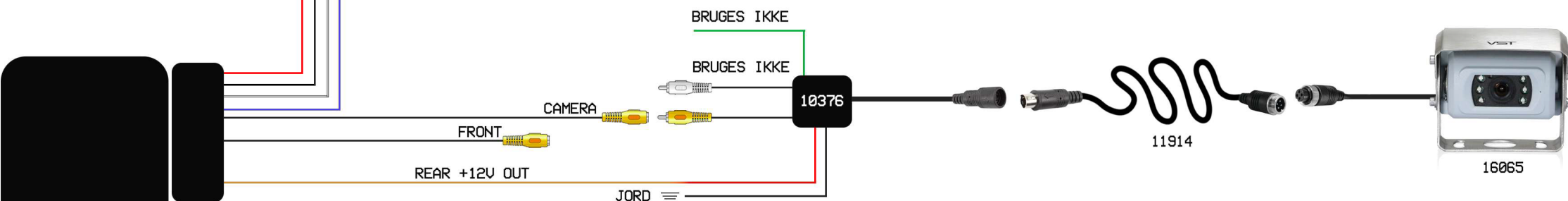
OFF
ON



EFTER BILMODEL

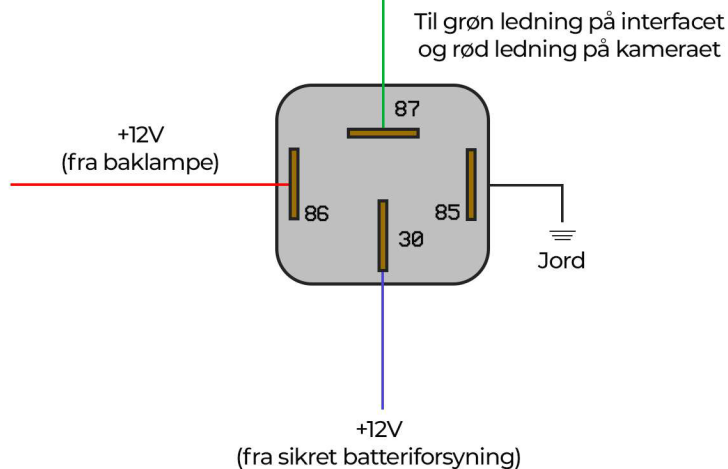
OSD MENU

REVERSE WIRE = CAN
FPG = ON
PDC = ON



Bemærk – Den grønne triggerledning bør **kun** bruges, hvis interfacet ikke automatisk skifter til bakkameraet via CANBUS-dekoding. Hvis der ikke sker noget, når bilen sættes i bakgear, kan denne grønne triggerledning bruges som manuel kontrol.

Det er vigtigt, at bak-signalet ikke er tilsluttet direkte – bak-signalet **skal** gå gennem et relæ som vist i diagrammet.



16058HD

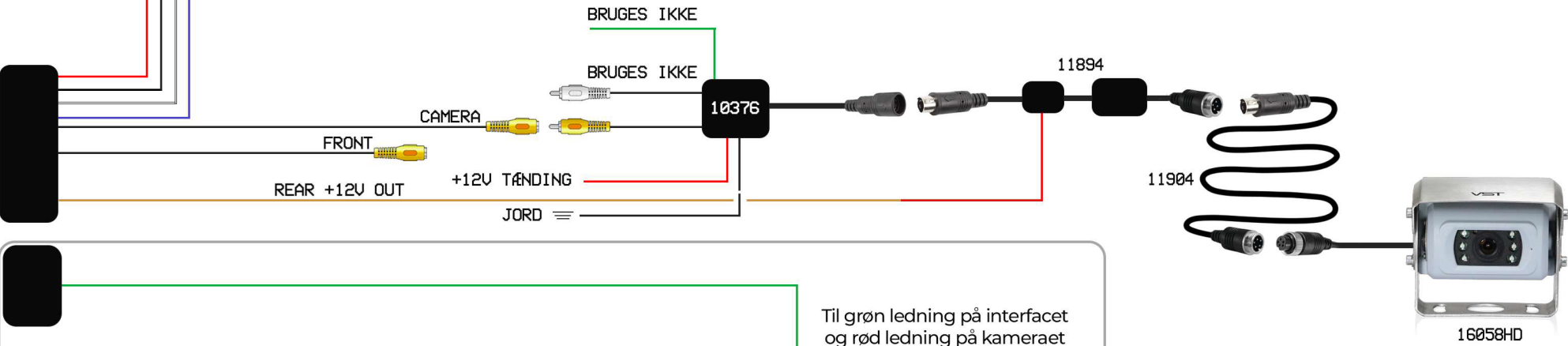
PLUG & PLAY LEDNINGSNET

DIP SWITCH

OSD MENU



REVERSE WIRE = CAN
FPG = ON
PDC = ON



Bemærk – Den grønne triggerledning bør **kun** bruges, hvis interfacet ikke automatisk skifter til bakkameraet via CANBUS-decoding. Hvis der ikke sker noget, når bilen sættes i bagegear, kan denne grønne triggerledning bruges som manuel kontrol.

Det er vigtigt, at bak-signalet ikke er tilsluttet direkte – bak-signalet **skal** gå gennem et relæ som vist i diagrammet.

