



App Instructions System Setup

ICA Turn-Assist XR45 Turn-off assistant

Blind Spot Information System



AXION systems comply with the current CE and EMC regulations. Copyright © 2020 AXION AG

All rights reserved. No part of this publication may be reproduced, processed or transmitted in any form or by any means, including photocopying, recording or any other electronic or mechanical process, without the written permission of the publisher.

The AXION camera monitor systems comply with the current CE and EMC regulations.

Copyright © 2020 AXION AG

All rights reserved. No part of this publication may be reproduced in any form, including

Table of contents

Notes	3
Preparations	3
Tools needed	3
Vehicle dimensions	3
Connection of laptop and ICA-MCU45 control unit	4
Switching on the ICA Turn Assist XR45.	4
Establishing the connection	4
System parameterisation	5
Setting brightness of LED warning light	6
Setting the speed signal	7
Checking the speed signal	7
Calibration procedure	7
Checking the detection zone	8
Procedure of the review	8
Export system settings	9
Troubleshooting	10

Notes

- Complete the system installation before starting to set the parameters.
- Note that the control unit must be placed in a location that does not interfere with driving.
- The parameters must be set according to the actual setpoints of the installation position to ensure the efficiency of the radar detection and to avoid misbehaviour of the system.

Preparations

Tools needed:

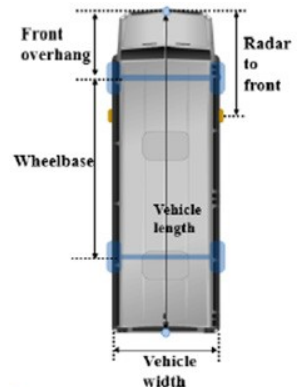
- USB-CAN interface
- Distribution cable (Y connector)
- Measuring tape
- Laptop
- SystemSetup Software



Download at: <https://www.axionag.de/service/download/cbc-xr45/>

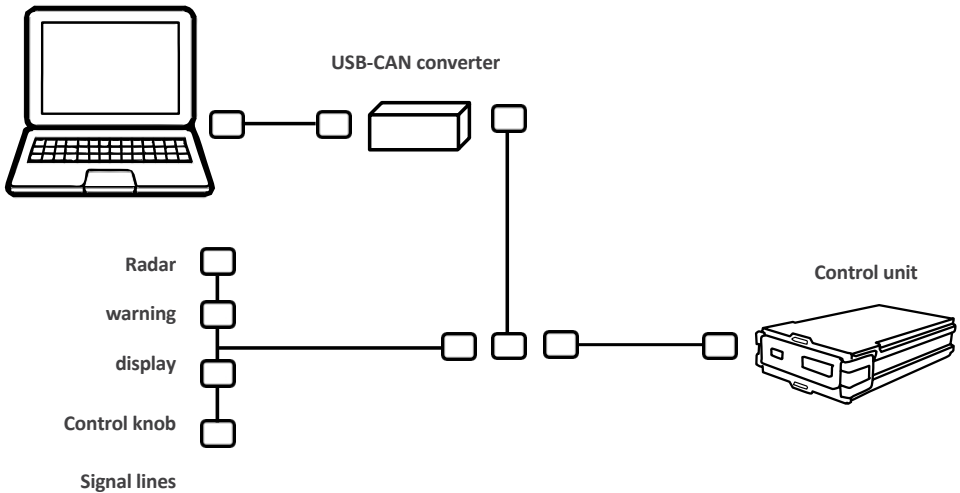
Vehicle dimensions:

- Measure and note the following values for later entry in the software (unit: m)
 - (1) Vehicle length
 - (2) Vehicle width
 - (3) Front overhang
 - (4) Wheelbase
 - (5) Distance from technical front edge of vehicle to centre of radar



Connection of laptop and ICA-MCU45 control unit

- Use the distribution cable to connect the USB-CAN interface, the control unit and the laptop. It is connected to the F-Radar port.



Switching on the ICA Turn Assist XR45

- Switch on the ignition or start the vehicle
- LED warning light lights up for 3 seconds
- The yellow and red colours light up in sequence for 1.5 seconds and the buzzer sounds for 3 seconds to indicate that the system is functioning normally.

Establishing the connection

- Start SystemSetting software
- Check correct ComPort
- Enter the registration number of the vehicle
- Select preferred language

RadarSystemSetting 1.1.1.3

Kennzeichen	<input type="text" value="Axion"/>
Language	<input type="text" value="Deutsch"/>
Spezifikation	<input type="text" value="AXION APP (ABE)"/>
ComPort	<input type="text" value="COM4"/>
<input type="button" value="OK"/>	

System Parameterisation

- **Menu item "Radar"**
- Enter the previously measured values, taking into account the possible range of values Important: Separator "." and unit "**m**".
- Click on "**Save**": system connection is established and values are saved
- After successful saving, a confirmation window appears
- During the input, the respective value is displayed pictorially in the right-hand area as support

RadarSystemSetting

AXION System Setting Sprache COMPort COM4

Radars Steuerung Fahrzeug Prüfung Export

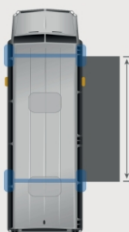
Model: Default

Bezeichnung	Wert	Bereich
Fahrzeuglänge	7	(1~15)
Fahrzeugbreite	2.1	(0.1~3)
Überhang Front	1.1	(0.1~5)
Radstand	4.7	(1~Fahrzeuglänge)
✓ Fahrzeugfront bis Radar	2.5	(0~Fahrzeuglänge)

Einheit: m

Speichern

Version Radar: V5.3.1.17.x11.112 Steuerung: 94.10.175.2b1 Spezifikation: AXION APP (ABE) Kennzeichen: Axion



Setting brightness LED- Warning light

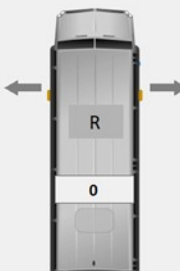
- **Menu item "Control"**
- Optional setting option
- Allows the brightness of the LED warning light to be set in day or night mode. Subsequent switching is possible through the external button ICA-EBT45
- System data is read out automatically
- The stored values are displayed in the window. The higher the value, the brighter the LED
- Enter the desired values
- Click on **"Save"** → Values are sent to the control unit
- After successful saving, a confirmation window appears

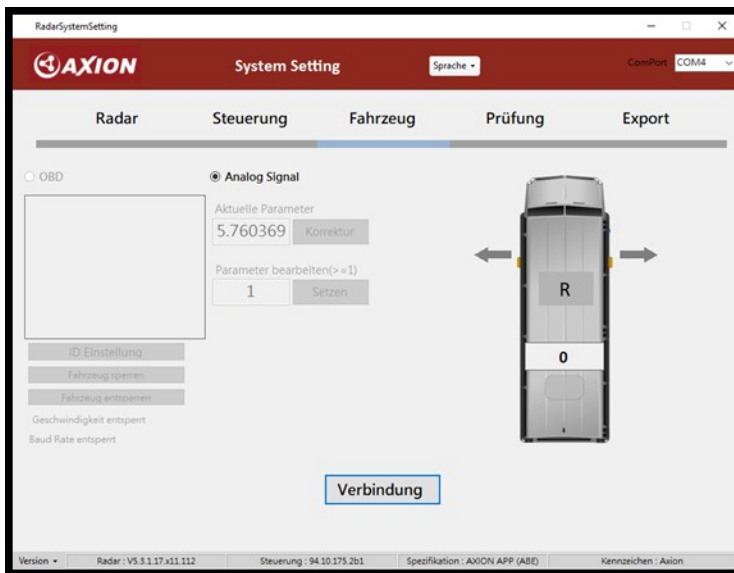
The screenshot shows the 'RadarSystemSetting' application window. The title bar includes the AXION logo and the text 'System Setting'. A language dropdown is set to 'Sprache' and a COM port dropdown is set to 'COM4'. The main menu has five tabs: 'Radar', 'Steuerung' (selected), 'Fahrzeug', 'Prüfung', and 'Export'. In the 'Steuerung' tab, there are two input fields: 'LED Helligkeit (Tag) : 100' and 'LED Helligkeit (Nacht) : 25'. To the right of these fields, text indicates '※ Bereich : 1 ~ 100' and 'LED Helligkeit (Tag) >= LED Helligkeit (Nacht)'. Below the input fields is a button labeled 'Systemerkennung'. At the bottom center of the window is a large 'Speichern' (Save) button. The status bar at the very bottom displays version information: 'Version : Radar - V5.3.1.17.x11.112', 'Steuerung - 94.10.175.261', 'Spezifikation - AXION APP (ABD)', and 'Kennzeichen - Axion'.

Setting the speed signal

- **Menu item "Vehicle"**
- Attention: The adjustment is made while driving and must be carried out by two persons!
- This procedure checks the speed signal to ensure correct wiring and calibration.

Checking the speed signal

- Click on **"Connection"** → Confirmation window appears
- The speed signal is read via the analogue line
- During the connection, the indicator signal can also be checked in the illustration on the right →  switched on = yellow display



Calibration procedure:

- Accelerate the vehicle to 40 km/h and hold for 3 seconds
- The buzzer sounds depending on the speed being driven:
 - 0 km/h: Long tone
 - 40 km/h: Fast interval (0.1 s)
 - Neither 0 nor 40 km/h: Slow interval (0.25 s)
- If the buzzer at 40 km/h does not sound in the fast interval, a correction must be made → Click on **"Correction"**.
- As soon as the speed is read correctly, the connection can be disconnected again. → Click on **"Connected"**

Checking the detection range

- **Menu item "Examination"**
- The check is only possible after the parameters have been saved correctly as described in chapter 2
- A helper is needed to move around the stationary vehicle.
- There should be at least 3 m of space around the vehicle and no interfering (especially metallic) objects in the radar's field of view.

Procedure of the review

- (1) Click on "Connection" → Button turns green
 - (2) Click on "Start" → Button turns green
 - (3) The tester now moves around the vehicle at a distance of approx. 1 m as indicated
 - (4) There is a test block in each of the corners of the chart
 - (5) As soon as the detection was successful in the respective area, the block turns green
- Note: When installing a radar, only the two test blocks on the corresponding side of the sensor are relevant.

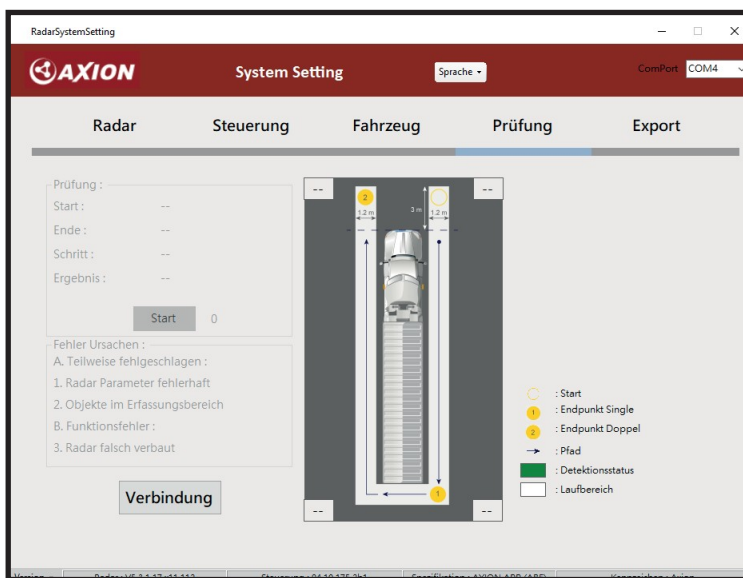
(6) After the check: Click on "Stop"

(7) Test result is displayed

Successful: Test successful NG:

An error has occurred

- Check entered vehicle parameters
 - Check the installation position of the radar
 - Ensure sufficient free space in the walking area
- (8) Disconnect after successful test



Export system settings

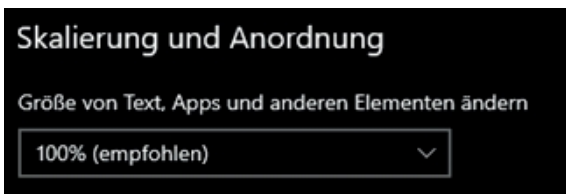
- **Export" menu item**
- This setting is used to document correct installation
- Fill in all values in the displayed table
- Confirm the vehicle data, functionality and installation position for correctness

The screenshot shows the 'RadarSystemSetting' application window. The title bar reads 'RadarSystemSetting'. The main header is red with the 'AXION' logo on the left, 'System Setting' in the center, and a 'Sprache' dropdown on the right. Below the header is a navigation bar with five tabs: 'Radar', 'Steuerung', 'Fahrzeug', 'Prüfung', and 'Export'. The 'Export' tab is selected and highlighted in blue. The main content area displays a table with the following data:

	Kennzeichen	Axion
	Kilometerstand	12345
	Installateur	Axion
	Bestätigung Fahrzeugdaten	<input checked="" type="checkbox"/>
	Bestätigung Funktionalität	<input checked="" type="checkbox"/>
	Bestätigung Einbauposition	<input checked="" type="checkbox"/>
✓	Radar S/N	00000

Below the table is a 'Speicherort' label followed by an empty text input field. At the bottom center is an 'Export' button. The footer bar contains the following information: 'Version', 'Radar: V5.3.1.17 x11.112', 'Steuerung: 94.10.175.2b1', 'Spezifikation: AXION APP (ABE)', and 'Kennzeichen: Axion'.

- If the images in the export do not capture the window correctly: Make sure that the scaling in the Windows display settings is at 100%.



Troubleshooting

(1) Value is outside the range

Error indication that the input value exceeds its limit range. Enter the parameters correctly according to the limit range.

(2) Connection cannot be opened

Check the correct connection of the USB-CAN interface.

(3) Please check the data integrity

The entered value is invalid. Pay attention to the correct separator for input values (. = point)

(4) Error in radar correction

Check the mounting position of the radar. It may be mounted the wrong way round or outside the permitted angle tolerance.

(5) Connection failed

- Restart the system
- Check the connectors of the radar sensor and the control unit
- Check the supply voltage
- If the fault cannot be rectified, contact your specialist dealer or the manufacturer

(6) Loading failed

Check the correct connection of the USB-CAN interface

(7) Setting failed Restart the system

(8) Separate

Check that the control unit is switched on correctly